



ARTESANIA X  
COLLECTION

SAMUEL & SONS  
LAURA KIRAR





*Shown from top to bottom:  
Lazo Cord with Tape and Torero  
Embroidered Border in Obsidian*



## LAURA KIRAR

The founder and creative director of Laura Kirar Design is an internationally renowned interior and product designer. Her mission is to foster artistic exploration in all endeavors and to inspire others with art, craft and design from around the globe.

Under her direction, her team creates elegant, innovative home interiors and products, from tile and bath fixtures to seating, lighting, textiles, rugs and decorative accessories, with a timeless sensibility reflecting her deep respect for craft, history and innovation. Projects range from high-end residences to award-winning commercial interiors, restaurants, showrooms and hotels.

With a degree in sculpture and interior architecture from the Art Institute of Chicago, Laura's passion for artistic exploration in numerous mediums continues to infuse her work with originality and thoughtful attention to detail. Her extensive world travels and extended time in Mexico are also powerful influences on each project she undertakes. Laura Kirar has made an indelible mark on the design industry as a creator, patron, collector, and connector.

The **Uxmal Border** combines multiple embroidery stitching techniques with laser cut velvet on a textural linen ground. The pattern is derived from ornamentation found in Mayan architecture. Multi-colors are used both to delineate the pattern and create accents.



*Shown from top to bottom: Lazo Cord with Tape,  
Serpiente Border and Uxmal Appliqué Border in  
Cochineal*

*From the cover top to bottom: Ojos Appliqué  
Border in Obsidian, Lazo Cord with Tape in Sisal,  
Torero Embroidered Border in Obsidian, Lazo  
Cord with Tape and Frida Border in Obsidian*



*Mariachi Border in Cochineal*



Artesania X is an eclectic collection of artisanal passementerie with pattern and color influences derived from traditional Mesoamerican handcraft.

The **Serpiente Border** is a wide-woven, double cloth ikat border inspired by the undulating pattering on serpents and the **Mariachi Border** is a linen cord macrame braid.



*Serpiente Border in Jade*

“Traveling the world, I am always intrigued by a culture’s handcraft. My passion for artisan textiles inspired the creation of this elegant collection of trims for Samuel & Sons that is simultaneously refined and natural.”

– Laura Kirar

Embroidery, appliqué and hand-covered beads are all techniques used to render the patterns in Artesania X. These patterns were inspired by the global influences from Laura’s travels, her time in Mexico, as well as her deep appreciation for nature which can be seen in this collection’s textures, selection and combinations of materials as well as in the patterning. “There is such grand architecture and scale in the Yucatan, rich history and materials that have withstood the test of time,” she said.

*Shown from left to right: Serpiente Border in Jade and Mariachi Border in Sisal*

Artesania X trimmings are textural and dimensional, woven from natural materials such as linen, raffia, and wool. In certain patterns, these matte fibers are accented with strands of metallic thread introducing an interesting juxtaposition and a bit of lux.

**Torero Beaded Fringe:** Oblong, hand-covered tonal beads are suspended from an embroidered header incorporating a rhythmic pattern of triangles depicted in metal yarns.



*Torero Embroidered Border in Salt*

*Uxmal Appliqué Border in Cenote*



The collection's comprehensive colors range from neutrals such as Salt, Metate and Granite to rich earthen tones of Cochineal, Indigo and Nopal.

The Artesania X collection trimmings are tactile and intrigue the senses. The various border patterns and beaded fringe will delineate the lines of upholstered furniture or become the focal point on drapery at the window. Artesania X conveys an aesthetics that reflects Laura's deep respect for craft, history and its cross section with innovation.

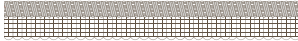
*Pyramid Embroidered Border in Indigo*



Ojos is a velvet appliqué border with a chain stitch shadow effect on the linen ground.

Ojos Appliqué Border in Sisal

Artesania X Collection



**CT-58313 5/16" (8.5mm)**

Lazo Cord with Tape

Available colors: Salt, Obsidian, Metate, Granite, Sisal, Terra, Cochineal, Nopal, Jade, Indigo, Cielo, Cenote



**GB-58316 .71" (18mm)**

Torero Embroidered Gimp

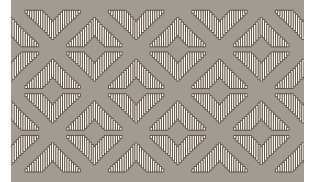
Available colors: Salt, Obsidian, Metate, Granite, Sisal, Terra, Cochineal, Nopal, Jade, Indigo, Cielo, Cenote



**BT-58322 1.9" (48.26mm)**

Pyramid Embroidered Border

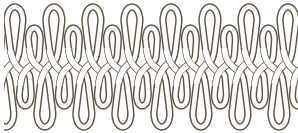
Available colors: Salt, Granite, Nopal, Indigo



**BT-58319 3.35" (85mm)**

Frida Border

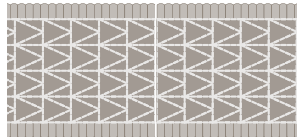
Available colors: Obsidian, Metate, Granite, Terra, Cochineal, Nopal, Jade, Indigo, Cielo, Cenote



**GB-58312 2.36" (60mm)**

Mariachi Border

Available colors: Salt, Obsidian, Metate, Granite, Sisal, Cochineal, Nopal, Jade, Indigo, Cielo, Cenote



**BT-58315 2" (51mm)**

Torero Embroidered Border

Available colors: Salt, Obsidian, Metate, Granite, Sisal, Cochineal, Nopal, Jade, Cenote



**BT-58320 2" (51mm)**

Mitla Border

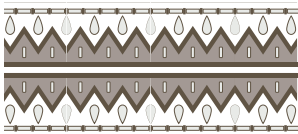
Available colors: Salt, Obsidian, Granite, Sisal, Terra, Cochineal, Nopal, Jade, Indigo, Cielo, Cenote



**BT-58321 3.35" (85mm)**

Serpiente Border

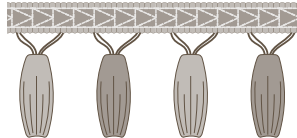
Available colors: Salt, Obsidian, Metate, Granite, Sisal, Terra, Cochineal, Nopal, Jade, Indigo, Cielo, Cenote



**BT-58318 2.6" (65mm)**

Uxmal Appliqué Border

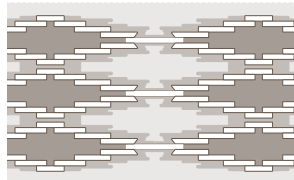
Available colors: Salt, Obsidian, Granite, Sisal, Terra, Cochineal, Nopal, Indigo, Cenote



**TF-58314 2.7" (69mm)**

Torero Beaded Fringe

Available colors: Salt, Obsidian, Metate, Granite, Sisal, Terra, Cochineal, Nopal, Jade, Indigo, Cielo, Cenote



**BT-58317 3.38" (86mm)**

Ojos Appliqué Border

Available colors: Salt, Obsidian, Metate, Granite, Sisal, Terra, Cochineal, Indigo, Cielo

